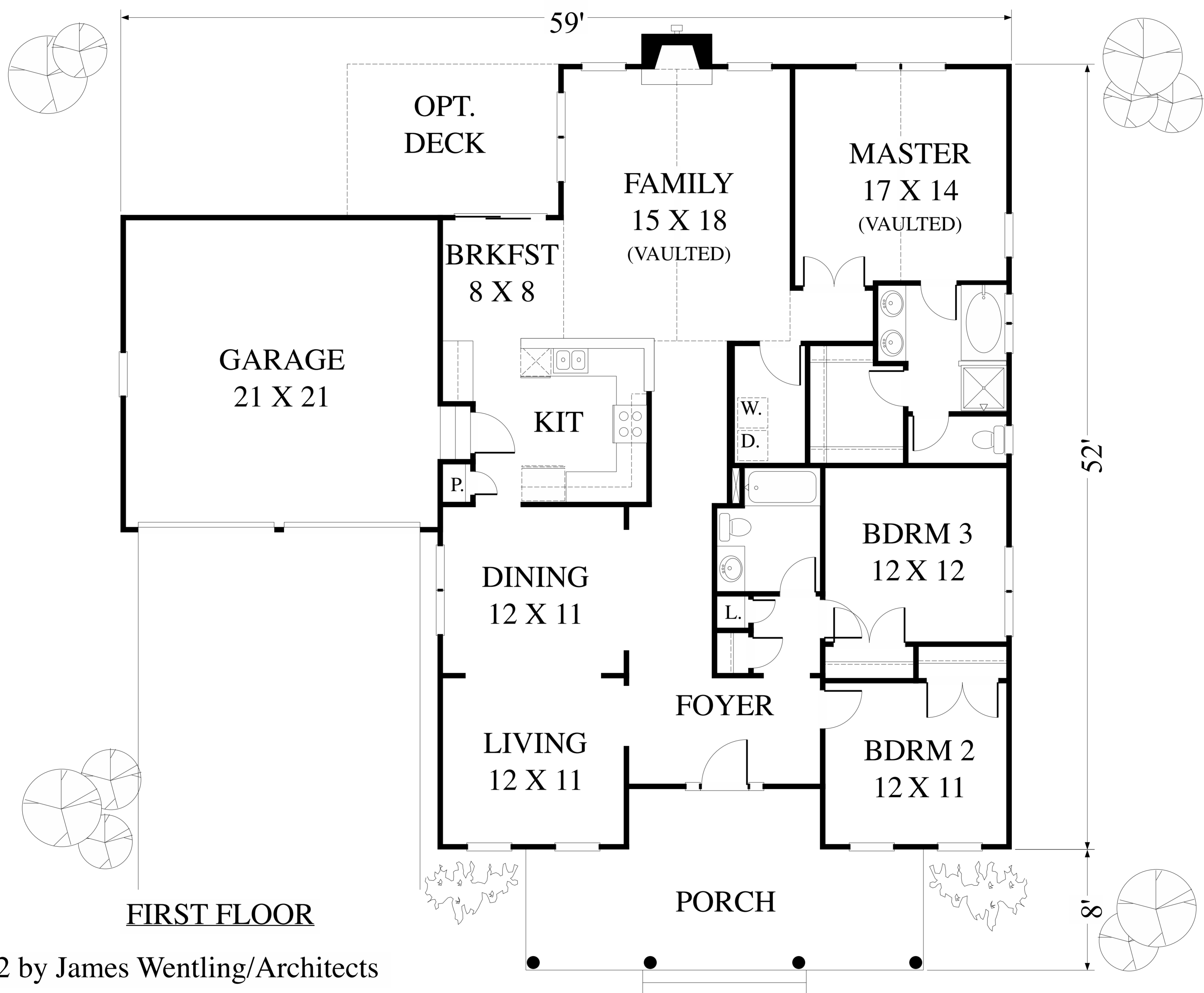


MODEST MOVE-UP



Copyright 2002 by James Wentling/Architects

120-01 E THE ELTON 1812 SQ FT

This popular southern ranch plan features a useable front porch and is rendered in a Greek Revival style. Inside are three bedrooms with formal living and dining rooms in addition to the informal vaulted family room. The garage is pulled back from the front facade in order to reduce its presence. This plan features a crawl foundation

PRICE B

JAMES WENTLING / ARCHITECTS

PRICE B

Plan Library Service